



SCOTIA

Chapelark, Oldmeldrum
HT125CT - Milton - RH

CHAPELPARK, OLDMELDRUM

Plot - : HT125CT - Milton - RH

- Note : Any deviation to the currently compliant electrical layout to be in accordance with the Technical Standards Handbook 2011.
- All dimensions are in millimeters unless noted otherwise.
- Indicative Solar Panels - location is dependant on the orientation of the house/plot.



Front Elevation 1:100



Side Elevation 1:100

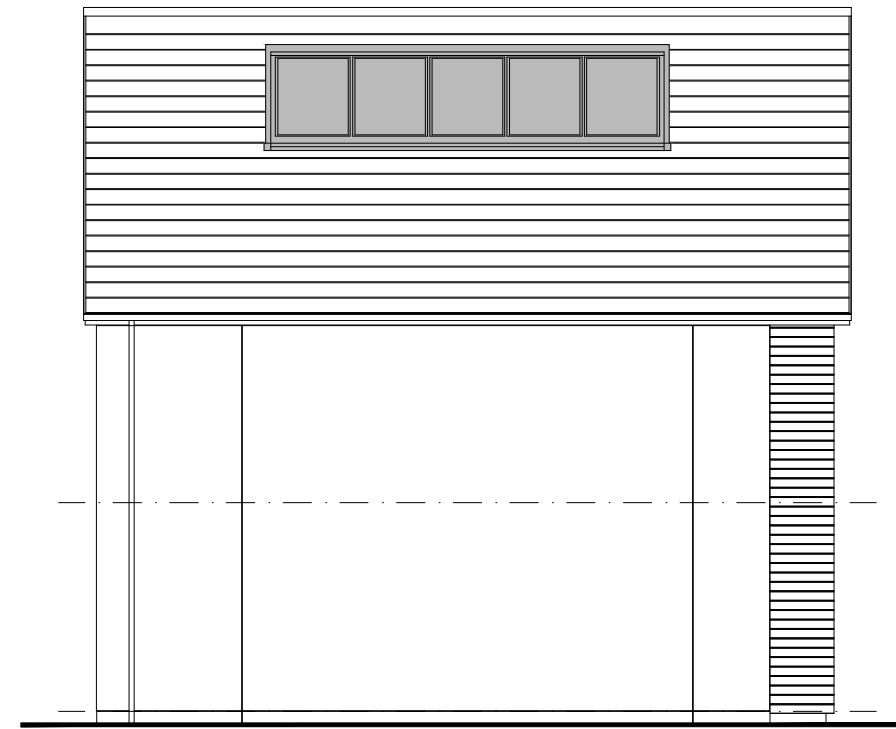
CHAPELPARK, OLDMELDRUM

Plot - : HT125CT - Milton - RH

- Note : Any deviation to the currently compliant electrical layout to be in accordance with the Technical Standards Handbook 2011.
- All dimensions are in millimeters unless noted otherwise.
- Indicative Solar Panels - location is dependant on the orientation of the house/plot.



Side Elevation 1:100

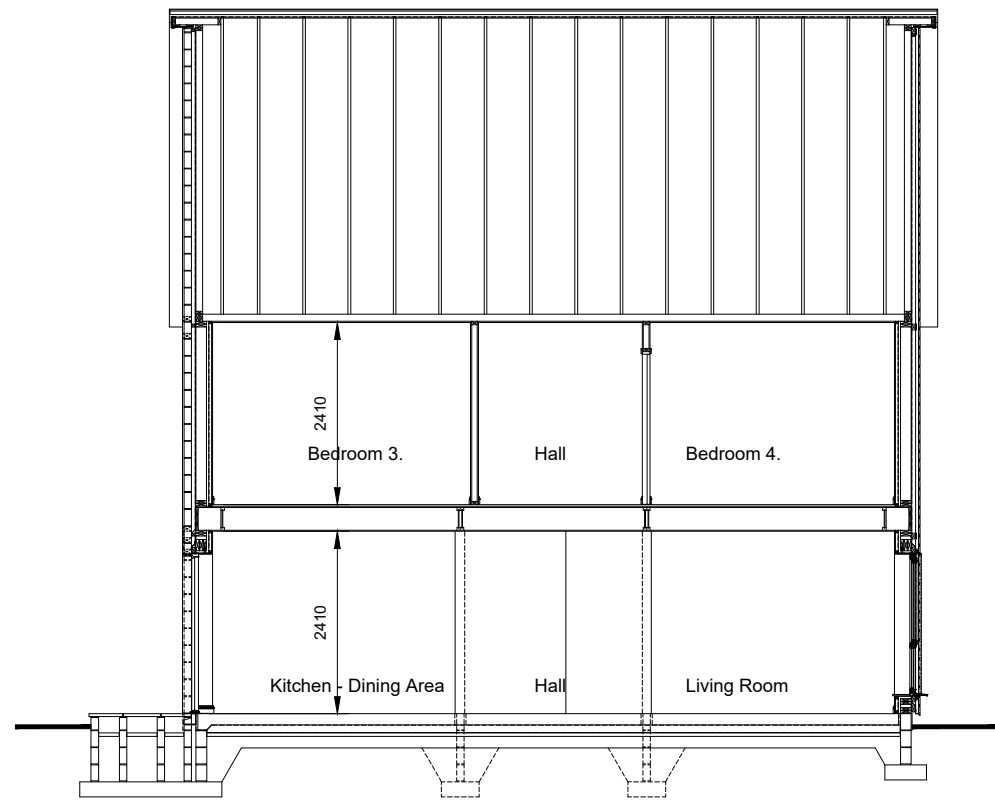


Rear Elevation 1:100

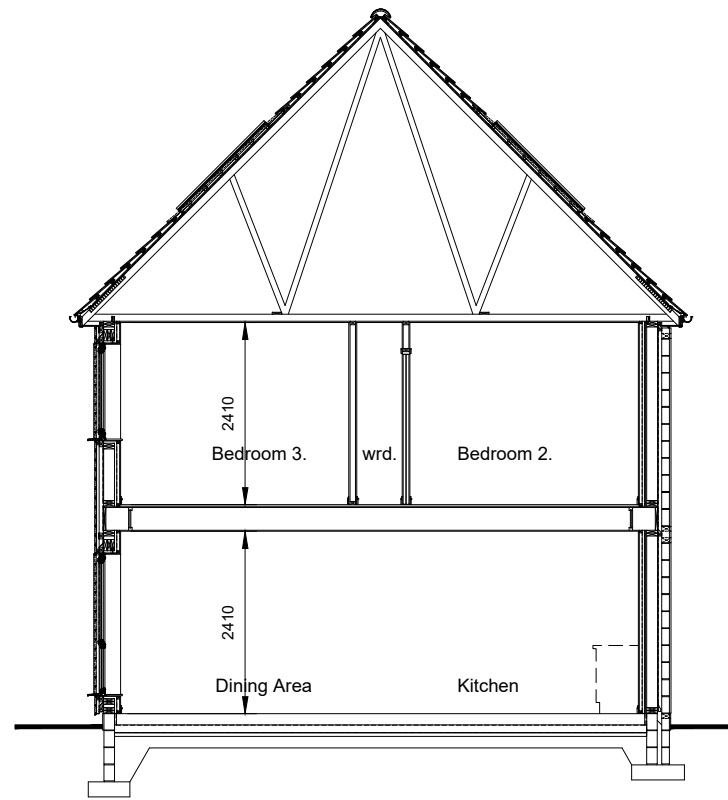
CHAPELPARK, OLDMELDRUM

Plot - : HT125CT - Milton - RH

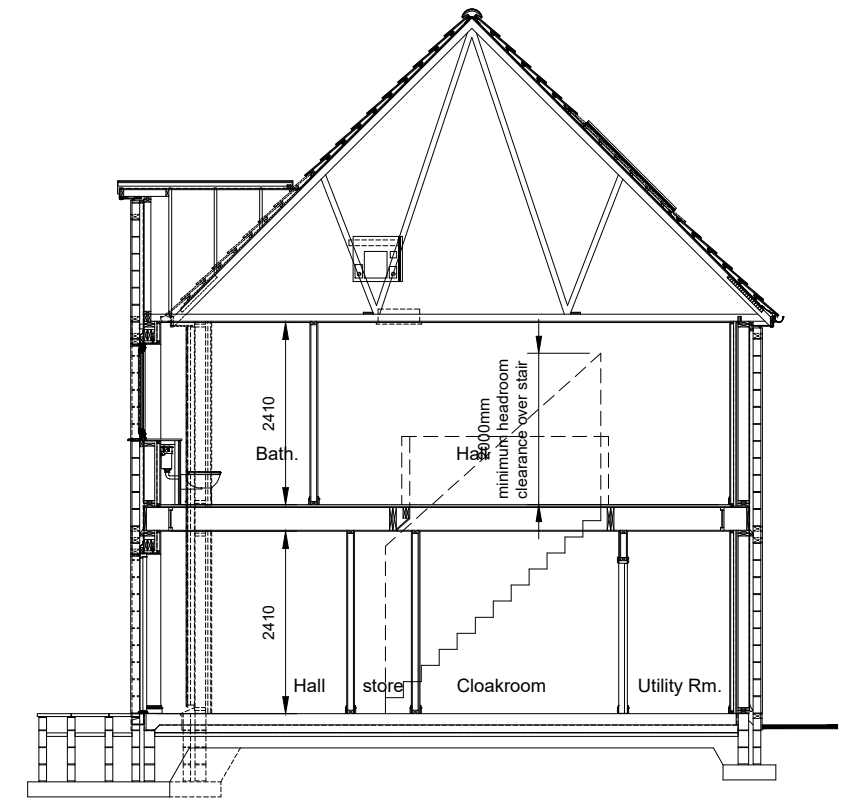
- Note : Any deviation to the currently compliant electrical layout to be in accordance with the Technical Standards Handbook 2011.
- All dimensions are in millimeters unless noted otherwise.
- Indicative Solar Panels - location is dependant on the orientation of the house/plot.



Section A-A 1:100



Section B-B 1:100



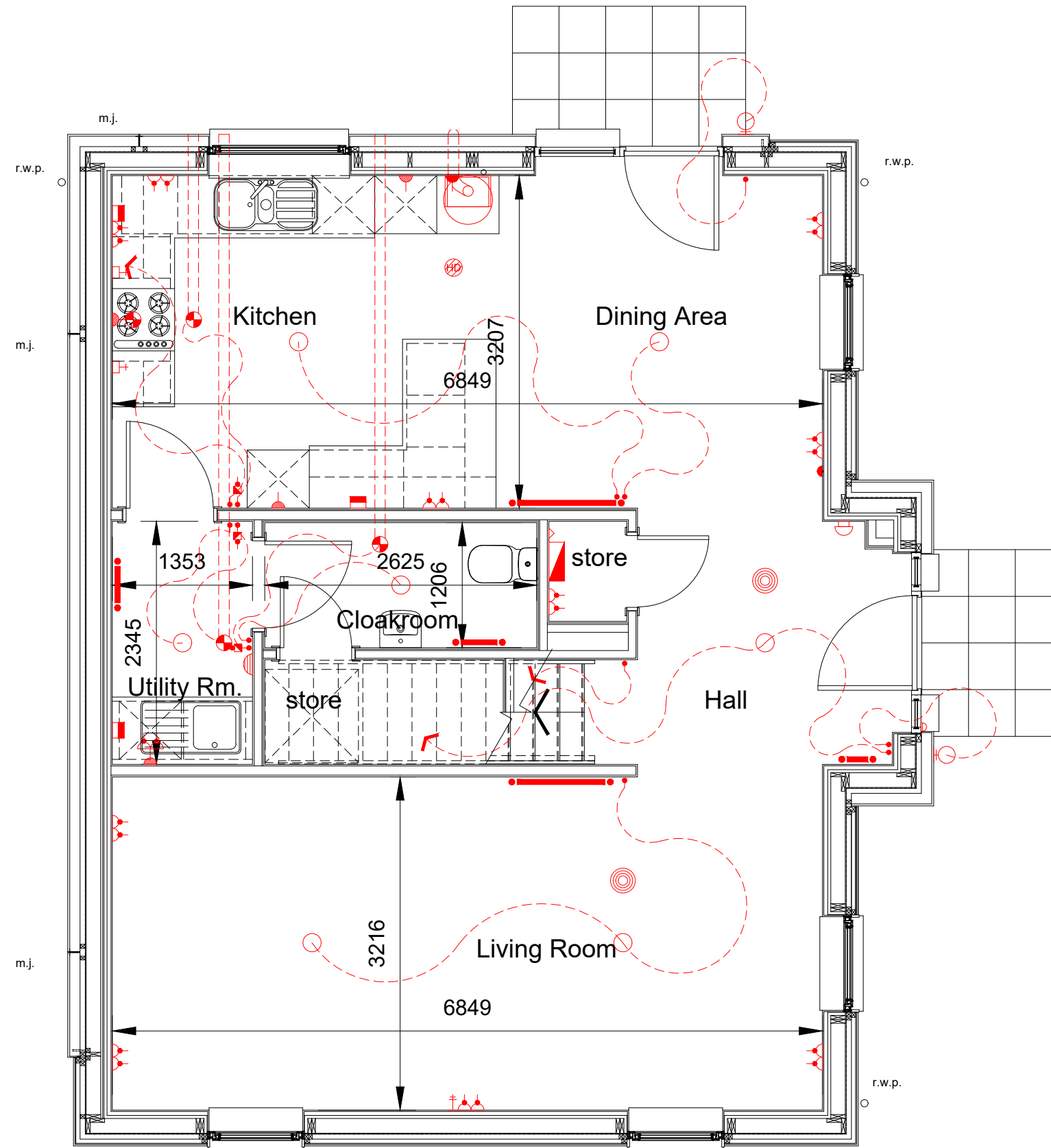
Section C-C 1:100



CHAPELPARK, OLDMELDRUM

Plot - : HT125CT - Milton - RH

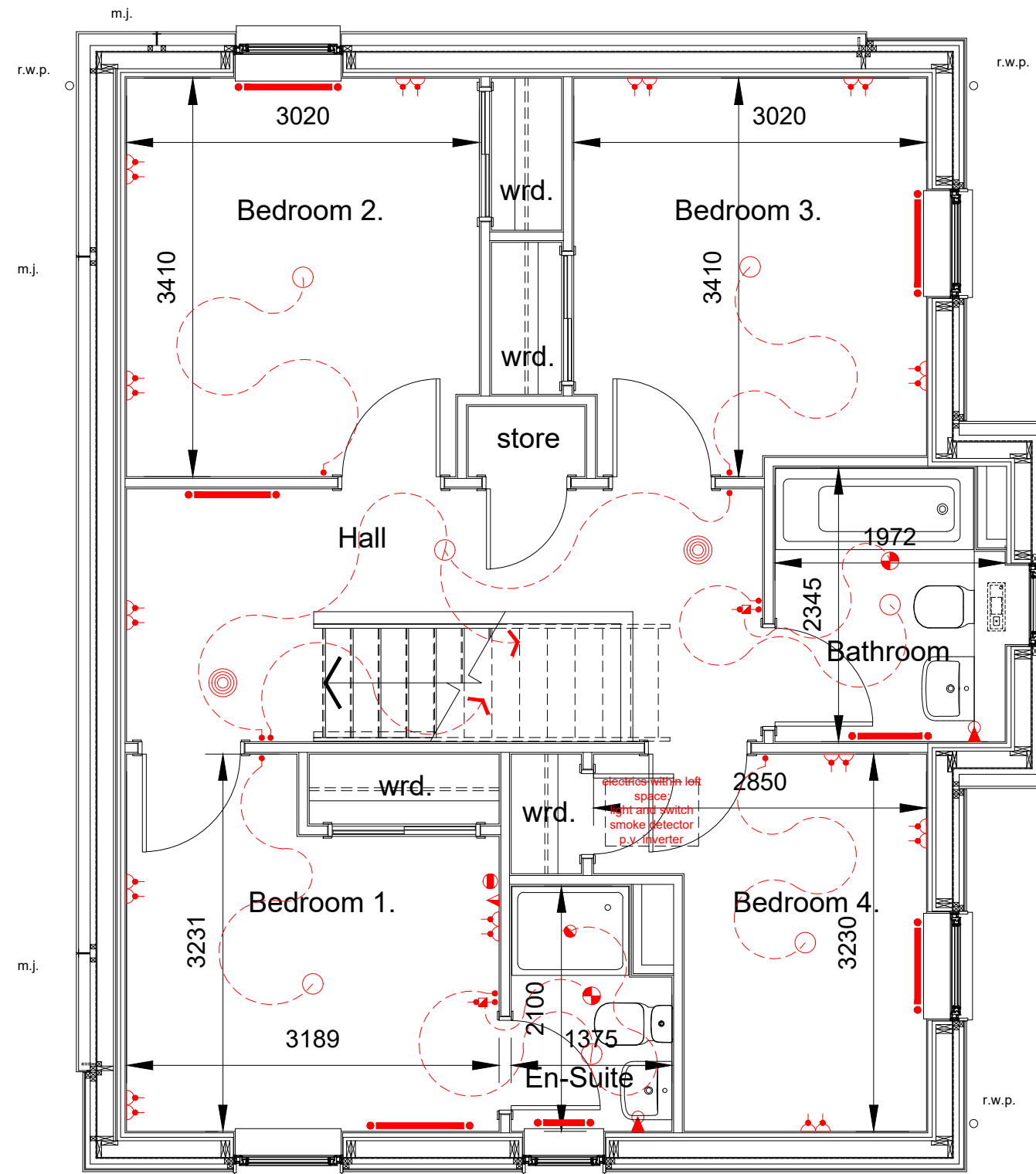
- Note : Any deviation to the currently compliant electrical layout to be in accordance with the Technical Standards Handbook 2011.
- All dimensions are in millimeters unless noted otherwise.



CHAPELPARK, OLDMELDRUM

Plot - : HT125CT - Milton - RH

- Note : Any deviation to the currently compliant electrical layout to be in accordance with the Technical Standards Handbook 2011.
- All dimensions are in millimeters unless noted otherwise.



CHAPELPARK, OLDMELDRUM

Plot - : HT125CT - Milton - RH

- Note : Any deviation to the currently compliant electrical layout to be in accordance with the Technical Standards Scotland 2016 Electrical Standards.
- All dimensions are in millimeters unless noted otherwise.

| Electrical Legend. | |
|--|--|
| (all electrical points are to be located in accordance with general notes) | |
| | Twin 13 amp power socket |
| | Single 13 amp power socket |
| | Twin 13 amp power socket- surface mounted within garage |
| | BT / Digital TV / satellite multi point |
| | Master BT point |
| | BT point - client extra |
| | Extract fan |
| | note : recirculating fan above cooker with separate extract fan ducted externally within kitchen. |
| | 45 amp oven - hob controls |
| | 13 amp fused spur at low level with switched outlet at high level. |
| | 13 amp fused spur at high - low level (to suit) with switched outlet at grid switch. |
| | 13 amp fused spur - surface mounted within garage |
| | Multi grid switch |
| | Switch point |
| | Pendant light fitting |
| | Low voltage downlighter |
| | Shaver point - min. 150mm above any projecting surface ie. vanity worktop |
| | Central heating time clock |
| | Heating remote sensor |
| | Electrical consumer unit |
| | Smoke alarm to BS 5446 : Part 1 : 2000 wired to protected circuit. |
| | Heat detector |
| | Carbon monoxide detector |
| | Combined Carbon monoxide - heat detector |
| | Carbon dioxide detector - within principal bedroom |
| | Radiator / heating panel |
| | Doorbell sounder |
| | Doorbell push pad |
| | External light with PIR for automatic illumination |
| | Mechanical extract fused isolator switch |
| | Security alarm key pad - with associated control panel and fused spur outlet located with vestibule cupboard. |
| | Category 5 outlet |
| | 8 way digital socket complete with switched socket on wall above / adjacent to electrical consumer unit. |
| | Television Point |
| | Ceiling mounted lighting track to client specification. |
| | 'Add on' multi-switch for Sky Q |
| | 13 amp fused spur at low level. |
| | External - wall mounted - door entry system call / display panel. |
| | Internal - wall mounted - door entry system handset. |
| | emergency lighting an emergency lighting system is to be designed and installed within the escape stair enclosure to come into, or remain in, operation automatically in the event of a local and general power failure. the emergency lighting should be installed in accordance with BS 5266: Part 1: 2005 as read in association with BS 5266: Part 7: 1999 (BS EN: 1838:1999). |
| | fire service ventilator control switch located at entry point to building and locally to uppermost window within stair enclosure to provide control to automatically open ventilators by the fire service. |
| | solar photovoltaic cell provision: to consist of a pv inverter, pv ac isolation switch and a dc isolation switch with all to be mounted on generic board within loft space. pv generation meter and pv ac isolation switch to be located adjacent to mains distribution board. |

Exterior Finishes

For further details on exterior finishes & colours please refer to exterior finishes palette.
Please ask sales advisor for further details.

Elevation Key

| | |
|---------------|--|
| rwp | : rain water downpipe |
| m.j. | : movement / contraction joint location |
| ext tile vent | : mechanical extract fan / duct terminal location via roof tile vent. |
| svp tile vent | : soil vent pipe terminal location via roof tile vent. |
| ext | : mechanical extract fan / duct terminal location via through wall vent. |
| BJR | : bed joint reinforcement |
| VCB | : tenmat intumescent ventilated cavity barriers. |



SCOTIA

The Small Print

This drawing is intended for illustration purposes only and may change for example in response to market demand, ground conditions, local authority and NHBC etc. Consequently, it should be treated as general guidance and cannot be relied upon as accurately describing any of the specified matters prescribed by any order made under the Property Misdescriptions Act 1991. Nor do the contents constitute a contract, part of a contract or warranty. Room sizes are thereby. For clarification, please ask for details.